

PSPF



PALM SPRINGS
PRESERVATION
FOUNDATION®

2014 EVENTS

Authors Harlan and Rosenow Sign Tribute Journals

Friday-Monday, February 14-17, 2014

Many hundreds of show-goers visited the PSPF booth at the 2014 Palm Springs Modernism Show & Sale and took the opportunity to talk with PSPF board members and volunteers about the foundation's advocacy, education and publishing programs.

Saturday, February 15, 2014

Authors Jim Harlan and Erik Rosenow signed copies of PSPF's 2011 tribute journal *The Alexanders: A Desert Legacy* and our 2013 journal *The Architecture of Desert Leisure*, respectively.



A Taste of the Leisure Life Tour

Tuesday, February 18, 2014

“A Taste of the Leisure Life” was a carefully curated tour that reprised the Palm Springs Preservation Foundation’s March 2013 Leisure Life Weekend. The tour showcased many of the Canyon View Estates (1962, William Krisel) modernist homes featured during that popular weekend event. Tourgoers received a copy of PSPF’s 36-page tribute journal The Architecture of Desert Leisure. The tour was generously sponsored by the Paul Kaplan modern real estate GROUP.

(Photos courtesy Gary Johns and Barbara Marshall)



Lost, Saved & Endangered: Modernist Architecture

Wednesday, February 19, 2014

PSPF board member Gary Johns presented his popular slide lecture, *Lost, Saved & Endangered: Modernist Architecture in Palm Springs*. The entertaining and informative lecture was replete with amusing anecdotes and rarely seen vintage photos. At the end of the lecture, Johns led a walking tour to the Korakia Pensione, one of the more architecturally notable hotels in the historic Tennis Club neighborhood. The lecture venue was generously underwritten by HEDGE.



Lost, Saved & Endangered: Modernist Architecture in Palm Springs

Sunday, October 12, 2014

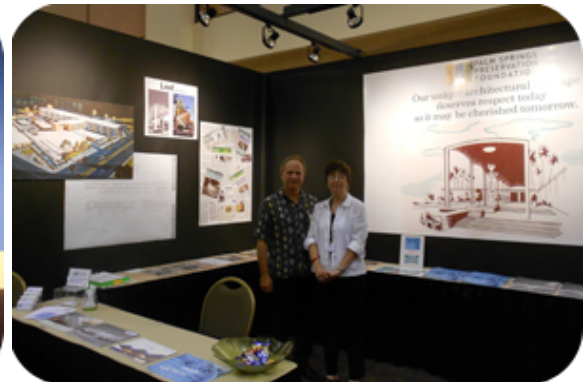
PSPF board member Gary Johns presented his popular slide lecture, *Lost, Saved & Endangered: Modernist Architecture in Palm Springs*. The entertaining and informative lecture was replete with amusing anecdotes, rarely seen vintage photos and included a special tribute to the demolished Spa Hotel colonnade. At the end of the lecture, Johns led a walking tour to the Korakia Pensione, one of the more architecturally notable hotels in the historic Tennis Club neighborhood. The lecture venue was generously underwritten by HEDGE.



PSPF Modernism Show Booth

Saturday-Sunday, October 11-12, 2014

Hundreds of show-goers visited the PSPF booth at the first annual Fall Edition of the Palm Springs Modernism Show & Sale and took the opportunity to talk with PSPF board members and volunteers about the foundation's advocacy, education and publishing programs.



National Preservation Month

May 17, 2014

PSPF was proud to support “National Preservation Month” celebrated by the city of Palm Springs on May 17, 2014. The first city celebration of this kind, the event was held at the Palm Springs Woman’s Club (1939, John Porter Clark) and featured a panel discussion about the challenges of preservation on which PSPF board of advisor member Tracy Conrad participated. The PSPF table, staffed by PSPF board members Jim Harlan and Susan Secoy-Jensen and PSPF volunteer Donna Lawton, was extremely popular.



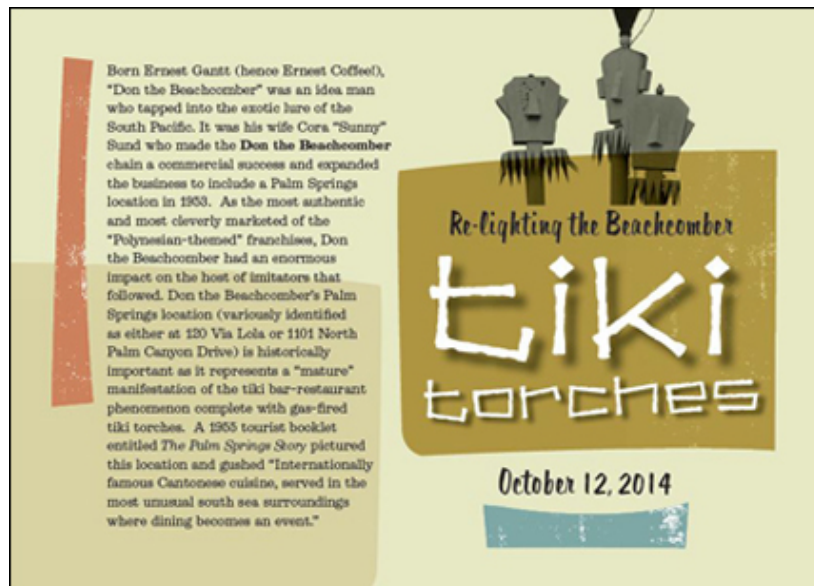
[May 18, 2014, Desert Sun](#) (National Preservation Month)

Re-lighting the Beachcomber

Sunday, October 12, 2014

The Palm Springs Preservation Foundation was honored to be a part of the ceremony to re-light the original gas-fired tiki torches at the historic Don the Beachcomber's Palm Springs location (120 Via Lola). PSPF is proud of the role it played in advocating for the preservation of these tiki torches and applauds the investment and stewardship of owners Tim Brinkman and Paul Warrin. PSPF also thanks Howard Hawkes and Kevin Kemper of H3K Design for their positive design influence during the course of the building's renovation. PSPF board member Gary Johns played a critical role in advocating for the preservation of the torches. At the re-lighting ceremony Johns spoke eloquently about how important even "small and modest" preservation efforts were to retaining the historic fabric of the city of Palm Springs.

PSPF distributed a "collectible" postcard (designed by Gary Wexler) to the many enthusiastic attendees of the torch relighting ceremony.



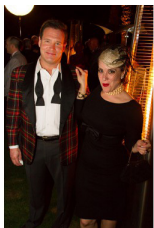
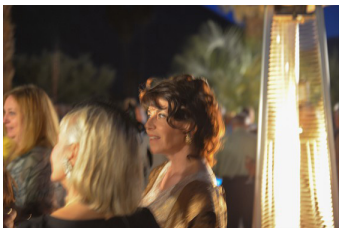
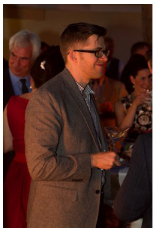
Retro Martini Party

February 21, 2014

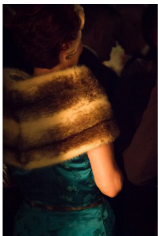
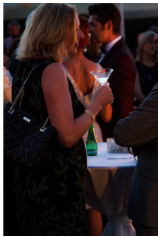
The 2014 Retro Martini Party was held at the Walt & Lily Disney Residence on the famous Smoke Tree Ranch. The remarkably intact ranch-style house was designed for the Disney's by California architect Carl Denney in 1957. Denney was an architect and project designer for Walter Elias Disney (WED) Enterprises for many years. More than 250 partygoers enjoyed the property's breathtaking desert landscaping and stunning San Jacinto Mountain views. (Photos courtesy Mood of Palm Springs and Jim Riche Photography)



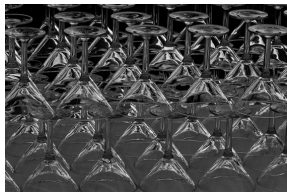
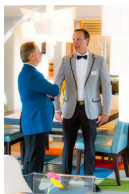
Retro Martini Party



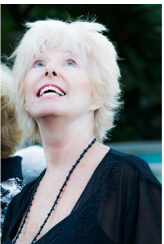
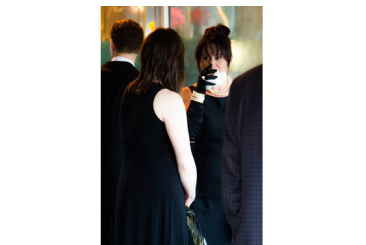
Retro Martini Party



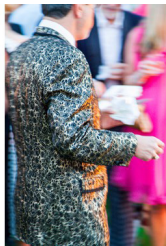
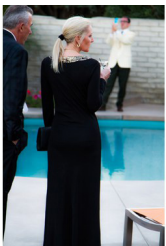
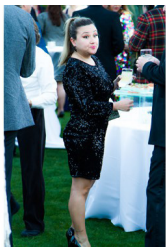
Retro Martini Party



Retro Martini Party



Retro Martini Party



Retro Martini Party



Royal Hawaiian Estates House Tour Participation

Sunday, February 16, 2014

PSPF was proud to be invited to participate in the Royal Hawaiian Estates Homeowners Association house tour of the historic Polynesian-themed complex designed by Wexler & Harrison in 1960. PSPF board members Susan Secoy-Jensen and Ron Marshall talked with tourgoers about PSPF's grant program and the benefits of historic districts. Included in the display was a mock-up of a "tiki apex." We commend the RHE HOA for their use of tour proceeds to fund a program to replace and restore missing and existing architectural details.

(Photos courtesy Bill Lewallen and John Martin)



Steel Development House #1 Tour

Saturday, October 11, 2014

PSPF was proud to unveil the beautifully rehabilitated Steel Development House #1 (Wexler & Harrison, 1962). The rehabilitation of the historic modernist structure was expertly supervised by Lance O'Donnell, AIA (o2 Architecture) who was on-hand to answer tourgoer's questions. To the delight of the attendees, architect Donald Wexler, FAIA made a surprise appearance. Each attendee received a copy of PSPF's 2010 tribute journal *Donald Wexler: Architect* and the *Steel Modern After All These Years* booklet, both authored by architect Patrick McGrew. Attendees also received a special commemorative "ticket" to the event designed by graphic artist Gary Wexler. Photo at right and Original Condition, Demolition and Restoration Progress photos courtesy Jim Riche Photography.

[October 11, 2014, *Desert Sun*](#) (Steel Development House #1)
[October 2014 Issue, *Palm Springs Life* magazine](#) (Modernism Weekend)



Wexler Harrison Steel Development House No. 1

Original Condition, Demolition and Restoration Progress



Exterior



Exterior Carport Area



Living Room and Kitchen



Den with added fireplace



Bedrooms



Bathrooms



Architect: Lance O'Donnell, AIA o2 Architecture
Contractor: D.W. Johnston Construction
Photography: Jim Riche Photography



Twin Palms Estate House Tour

Thursday, February 20, 2014

More than 600 tourgoers visited Frank Sinatra's beautiful "Twin Palms" estate (1947, E. Stewart Williams). With the help of PSPF, the home was designated a Class 1 historic site by the city of Palm Springs in March 2011 and has been described as "great midcentury design combined with Hollywood lore." Each of the four tour sessions included a brief talk about the architecture and history of the house by PSPF board members Erik Rosenow or Ron Marshall.

