

PSPF



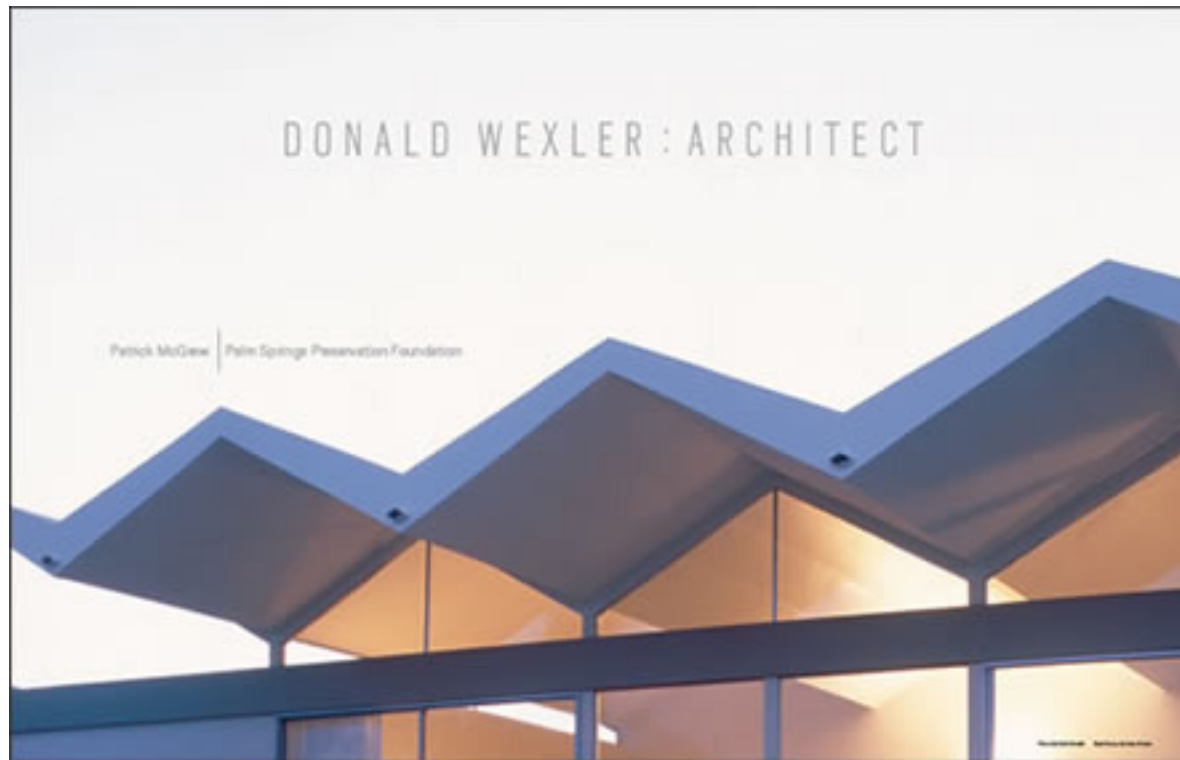
PALM SPRINGS
PRESERVATION
FOUNDATION®

2010 EVENTS

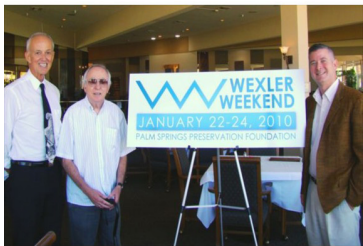
Wexler Weekend

January 22 - 24, 2010

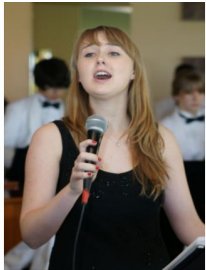
Wexler Weekend was a huge success attended by over 1,000 enthusiastic participants. Glorious weather and snow-capped mountain views made certain that this important educational weekend will be long remembered. Wexler Weekend was wholly supported by PSPF, private donations and a whopping 34 business sponsors. Unwavering support from architect Don Wexler and the Wexler family helped guarantee the weekend's success. Finally, in conjunction with the weekend, PSPF released a 60-page tribute journal entitled *Donald Wexler: Architect*. For many years to come, the Wexler tribute journal will serve to educate people about the importance of preservation and deepen their appreciation of the architectural gems found here in Palm Springs and the Coachella Valley.



Wexler Weekend



Wexler Weekend



Wexler Weekend



Lost, Saved & Endangered: Modernist Architecture in Palm Springs

Wednesday, February 17, 2010

Time: 8:30AM-10AM

Location: Cahuilla Room, Spa Resort Casino, 100 N. Indian Canyon Slide lecture “Lost, Saved and Endangered: Modernist Architecture in Palm Springs” by PSPF board member Gary Johns. Complimentary continental breakfast.

Photos courtesy Gregg Felsen Photography and PSPF. For copies please contact us at info@pspreservationfoundation.org.



Twin Palms Estate House Tour

Thursday, February 18, 2010

Time: 10:30AM-2PM

Location: 1145 E. Via Colusa

House tour of Frank Sinatra's spectacular Twin Palms Estate (1947) designed by architect E. Stewart Williams. Open house format, your tour should take about 45 minutes. Ticket price includes E. Stewart Williams tribute journal.

Photos courtesy Gregg Felsen Photography.

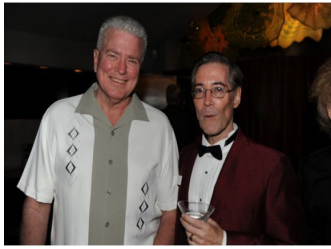
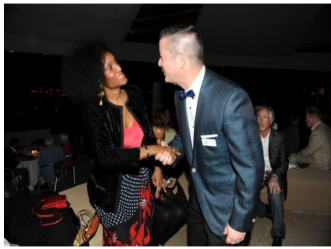
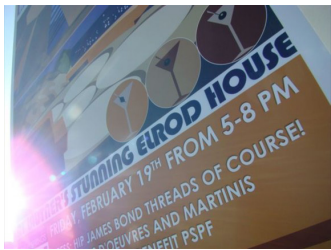


Retro Martini Party

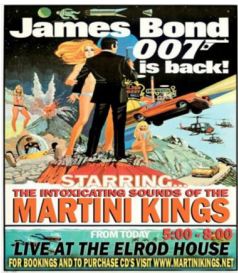
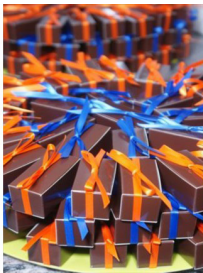
February 19, 2010

At our February 2010 Retro Martini Party guests enjoyed a martini with their fellow hipsters...as they watched the sun set...from the Arthur Elrod House, one of the world's most acclaimed examples of modernist architecture. Designed by architect John Lautner in 1968, the Elrod House entered the popular culture in 1971 as the setting for a famous scene in the James Bond "007" movie Diamonds are Forever. Photos courtesy Gregg Felsen Photography, Ned Redway Photography, Robert Reiff Photography, and PSPF.

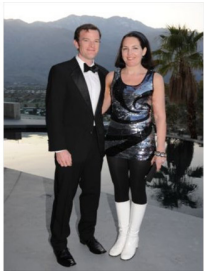
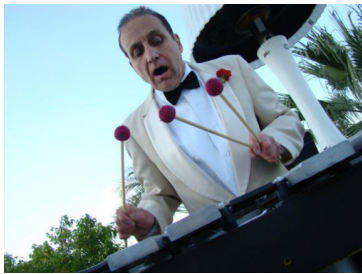
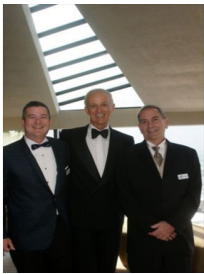
Retro Martini Party



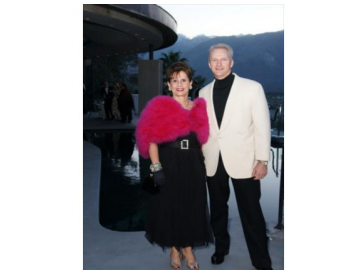
Retro Martini Party



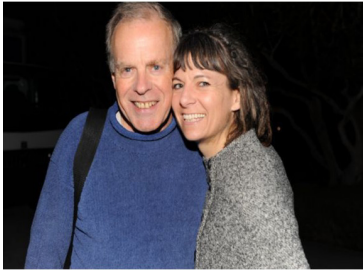
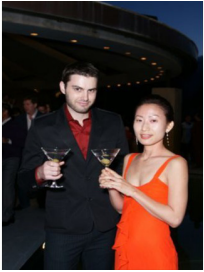
Retro Martini Party



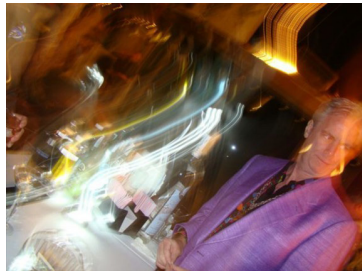
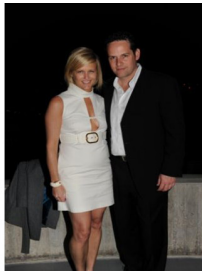
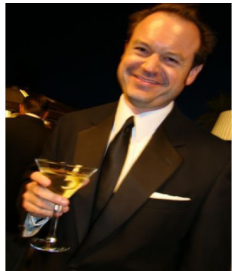
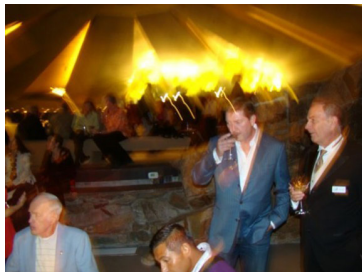
Retro Martini Party



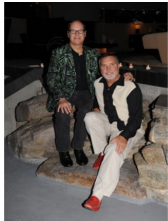
Retro Martini Party



Retro Martini Party



Retro Martini Party



Casablanca Adobe – March 21, 2010

March 21, 2010

The foundation was pleased to host an educational house tour and recognition event at the historic Casablanca Adobe. The free event, attended by over 230 people, gave PSPF an opportunity to distribute complimentary copies of its Spanish Colonial Revival tribute journal to the interested public. Mayor pro tem Rick Hutcheson presented owner Al Sophianopoulos with a framed copy of the Casablanca Adobe's future entry in PSPF's Class 1 historic sites booklet. The Casablanca Adobe was designated a Class 1 Historic Site by the city of Palm Springs on June 17, 2009.

The private residence, referred to by owners Sophianopoulos and Jeff Trachta as the "Casablanca Adobe" (historic name "Goodloe Residence") is a replica adobe constructed in 1936 by builder Lee Miller on property purchased by Dorothy Goodloe from Pearl McManus. In 1946, legendary screenwriter and Oscar winner Howard E. Koch purchased the house. Koch is best known for his important screenwriting contribution to the famous 1942 film *Casablanca*.

While living at the Casablanca Adobe, Koch was subpoenaed to appear before the House Un-American Activities Committee (HUAC) in Washington, D.C. Koch proved to be less than cooperative and was subsequently "blacklisted" from the American film industry. As a result, Koch's Palm Springs home became a refuge for other individuals blacklisted from movie-making.



Diane Keaton Book Signing at the O'Donnell House

March 28, 2010

The foundation was delighted to host a book signing of *California Romantica: Spanish Colonial and Mission-Style Houses* (Rizzoli) by Oscar award-winning film actress Diane Keaton. Aside from being an award-winning actress, director, and author, Diane Keaton is highly respected for her efforts in the California architectural preservation community. In addition to her advocacy of residential preservation, Ms. Keaton is active in campaigns with the Los Angeles Conservancy to save and restore many historic public buildings. Actor Jeff Garlin, known for his performances on the hit HBO series "Curb Your Enthusiasm," also attended the book signing.

The event was held at the O'Donnell House (1925), a Class 1 historic site offering incomparable views of Palm Springs. Designed by architect Charles Tanner to complement the Desert Inn, the house was built for Thomas O'Donnell by Palm Springs pioneer Nellie Coffman. The O'Donnell House was the perfect site for the event as the historic residence is prominently featured and beautifully photographed in *California Romantica*.



DeBrabant House – October 17, 2010

October 17, 2010

The foundation was pleased to host a docent-led house tour and recognition event at the historic DeBrabant House. Councilwoman Ginny Foat presented homeowners Mark and Jan Hilbert with a framed copy of the DeBrabant House's future entry in PSPF's Class 1 historic sites booklet. The free event, attended by over 350 people, also gave PSPF an opportunity to distribute complimentary copies of its educational Spanish Colonial Revival tribute journal to the interested public. The DeBrabant House was designated a Class 1 Historic Site by the city of Palm Springs on March 3, 2010.

A superb example of Spanish Colonial Revival architecture, the 1929 DeBrabant House is sited on a large, beautifully landscaped lot in the Las Haciendas Estates tract. The original concept for the tract was to create a neighborhood of estate-sized properties in the Spanish Colonial style and in this regard the DeBrabant House fulfills all expectations. Due partially to the tract's proximity to the famous El Mirador Hotel (a favorite stomping ground of the Hollywood elite), the area became a haven for actors and film executives and eventually became known as the "Movie Colony" district.

The DeBrabant House is designed around a central courtyard (as is commonly found in Spanish haciendas). The entire complex is roofed with hand-made barrel roof tiles and features broad roof overhangs. Exterior walls of cement plaster are studded with native rock and painted off-white. The original casement windows and light fixtures still survive.

The house's original owner was Madam Rachel de Brabant who acquired the property from her next door neighbor, the locally-prominent Dr. Jacob John Kocher. Rachel was the sister of Mr. Marius de Brabant, an important executive of various rail and shipping companies including the Los Angeles-Pacific Navigation Company where he served as the vice-president in the 1920s.



Royal Hawaiian Estates

November 28, 2010

The foundation was pleased to host an educational house tour and recognition event at the historic Royal Hawaiian Estates. The free event, attended by over 300 people, gave PSPF an opportunity to distribute complimentary copies of its Desert Polynesia tribute journal. Councilmember Rick Hutcheson presented representatives of the home owner's association with a framed copy of the Royal Hawaiian Estate's future entry in PSPF's Class 1 historic sites booklet. The Royal Hawaiian Estates was designated Palm Springs' first residential historic district by the city council on February 3, 2010.

Designed by the firm of Wexler & Harrison in 1960, Royal Hawaiian Estates has appeared in PSPF's Desert Polynesia and Donald Wexler: Architect tribute journals. A condominium complex of 40 units spread over five acres, the architecture sports many of the design elements found in the "tiki style" including outrigger beams, jutting gables and A-frame roof lines.

Royal Hawaiian Estates has also been the recipient of multiple PSPF grants to restore a missing architectural element known as a "tiki apex" formerly found on the building's outrigger beams. o2 Architecture (Lance O'Donnell, principal) designed the apexes using vintage photographs. o2 Architecture was on-hand at the event to explain their design process and discuss the clever solution they finally arrived at to guarantee the accurate reconstruction of the tiki apexes.

To read more about Royal Hawaiian Estates [click here](#).



Stephens House

December 11, 2010

The foundation was pleased to hold a docent-led house tour and recognition ceremony at the historic Stephens House (1949), designed by the firm of John Porter Clark and Albert Frey. Councilwoman Ginny Foat presented homeowners Bob Metcalf and David Skousen with a framed copy of the Stephens House's future entry in PSPF's Class 1 historic sites booklet.

Sited on a large triangular lot in the Rancho Royale Tract, the single-story, three-bedroom Stephens House possesses many of the features typical of the modernist style including a flat roof, large expanses of glass and idiosyncratic use of both glass and concrete block. The Stephens House was an early and extraordinary architectural effort by Clark & Frey and gained national prominence when it appeared in the September 1955 issue of *House Beautiful* where it helped introduce the idea of "The Family Room" to post-war America. The well-illustrated article showed the Stephens family in full atomic-era bliss enjoying a bright, modern kitchen with the latest appliances and clever storage solutions designed by Mrs. Stephens.

Several Stephens family members attended the event including Jim Stephens (son of Dr. Hugh Stephens), Shelly Stephens, Justine McLaughlin, Mike McLaughlin, Jessica Walke, Ethan Walke and John Allgaier.

As a pro bono effort, PSPF board member Patrick McGrew wrote the Class 1 nomination of the Stephens House and the Class 1 historic site designation was made official by the Palm Springs city council on November 3, 2010.

[December 11, 2010, *Desert Sun*](#) (Stephens House)

[December 10, 2010, *Desert Sun*](#) (Stephens House)

