

Palm Springs Preservation Foundation awards grant to Royal Hawaiian Estates

Mariecar Mendoza • The Desert Sun • September 8, 2010

The Palm Springs Preservation Foundation awarded a third preservation grant to the Royal Hawaiian Estates Home Owners Association, foundation officials announced Tuesday.

The \$1,770 grant allows for the HOA to fabricate five tiki apexes around the perimeter of the Royal Hawaiian Estates complex, officials said.

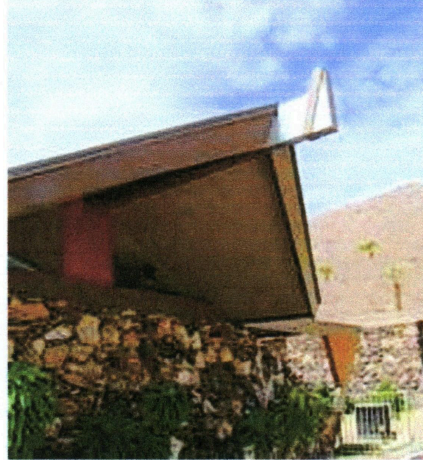
The HOA applied for its first foundation grant in April 2009 to contract with o2 Architecture to design and explore the feasibility of fabricating tiki apexes, which were removed from the complex in the 1990s.

According to the foundation, tiki apexes are a “defining feature of tiki- or Polynesian-modern architecture.”

The second grant then helped the HOA create a prototype of the tiki apex that was installed last month.

The Royal Hawaiian Estates was designed by Wexler & Harrison, an architect firm created by the 1952 partnership of Donald Wexler and Richard Harrison, and was recently designated Palm Springs’ first historic district, foundation officials said.

Information: (760) 837-7117 or visit www.pspreservationfoundation.org.



Tiki apexes are a defining feature of tiki- or Polynesian-modern architecture, according to the Palm Springs Preservation Foundation. The original ones were removed during the 1990s due to deterioration, but thanks to foundation grants Royal Hawaiian Estates have installed new tiki apexes. (Courtesy of Palm Springs Preservation Foundation)